



CBS
STUDIO
CENTER™

Newsletter

Romantically Challenged



Left to right: Alyssa Milano, Kyle Bornheimer, Josh Lawson and Kelly Stables

By Max Williger

Romantically Challenged is the latest project to take over “lucky” Stage 9, or as it’s more famously known, The Seinfeld Stage, at CBS Studio Center. In this series, television veteran Alyssa Milano returns as Rebecca, a recently divorced, high powered attorney and single mom who is struggling to get back into the dating scene. For support she turns to sassy sister Lisa

(Kelly Stables), her hopelessly romantic friend Perry (Kyle Bornheimer), and his roommate Shawn (Josh Lawson), an irresponsible, out of work writer.

The show takes place in Pittsburgh, a city of which creator and executive producer Ricky Blitt (*Family Guy*), a huge Penguins fan, is quite fond. James Burrows directs.

Look for *Romantically Challenged* this spring on ABC.

**Romantically
Challenged**

Studio Services

Carla's Café Commissary	5692
Car Wash	5042
Client Services	5099
Emergency Line	5555
Grip Dept	5711
Hair Salon	6000
Internet Access	5218
Joe's Gym	5099
Lighting	5349
Notary	5837
Parking Signs	5670
Paint Dept.	5396 /5858
Safety Hotline	6078
Sign Shop	5395
Special Effects	5671
Supply Station	5001
Take 5 Coffee	5979

RECYCLING

Stage and Media	5661
<i>Paint, Solvents, Spray Cans, Rags, Brush Wash, Batteries, Videotape, CDs, DVDs</i>	
Office Recycling	5966
<i>Toner Cartridges, Paper, Cans</i>	
E-Waste Recycling	5396
<i>Anything with a circuit board, ie TVs, Monitors, Recorders, Keyboards, Florescent Lights</i>	

Safety & Security

While operating utility (golf) carts on the lot, please abide by the following safety rules.

- Operate carts in compliance with the common rules of the road.
- Maintain a safe speed at all times.
- Approach sharp turns, blind corners and potentially hazardous areas with caution.
- Keep your arms and legs inside the cart while it is in motion, and remain seated.
- Do not allow guests or children to operate carts.
- Do not leave the ignition key in the cart when unattended.
- Report all accidents to the Security Department immediately.

Newsletter Staff

Contributing Editor Marsha Gorodkin
Design Elizabeth Gulick

PRODUCTION SCHEDULE

CSI:NY

(CBS PRODUCTIONS/CBS)

ENTERTAINMENT TONIGHT

(CBS TV DISTRIBUTION/CBS)

THE INSIDER

(CBS TV DISTRIBUTION/CBS)

ROMANTICALLY CHALLENGED

(BONANZA PRODUCTIONS/ABC)

COUPLES PILOT

(BONANZA PRODUCTIONS/ABC)

OPEN BOOKS PILOT

(BONANZA PRODUCTIONS /CBS)

THE PINK HOUSE PILOT

(OPEN 4 BUSINESS/NBC)

THIS LITTLE PIGGY PILOT

(FTP PRODUCTIONS/NBC)

FASTER FEATURE

(CBS FILMS)

FOOD FIGHT

(BRANT POINT PRODUCTIONS/CBS)

THE STRIP PILOT

(UNIVERSAL MEDIA STUDIOS/NBC)

PARKS AND RECREATION

(OPEN 4 BUSINESS/NBC)

WHO GETS THE PARENTS?

PILOT

(FTP PRODUCTIONS/ABC)

MARCH

Women's History Month

- 14 Daylight Savings Time begins
- 17 St. Patrick's Day
- 20 Spring begins
- 27 Earth Hour 8:30pm
- 28 Palm Sunday
- 29 Passover begins at sundown

HOLLYWOOD OVAIONS

67TH ANNUAL GOLDEN GLOBE AWARD WINNER

Best Performance by an Actress in a Television Series – Musical or Comedy

TONI COLLETTE
UNITED STATES OF TARA

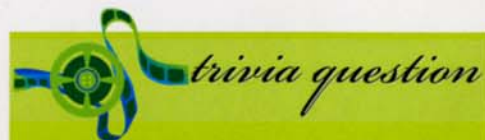


Recent CBS Staff Appointments & Promotions



Joe Raffel,
Accountant

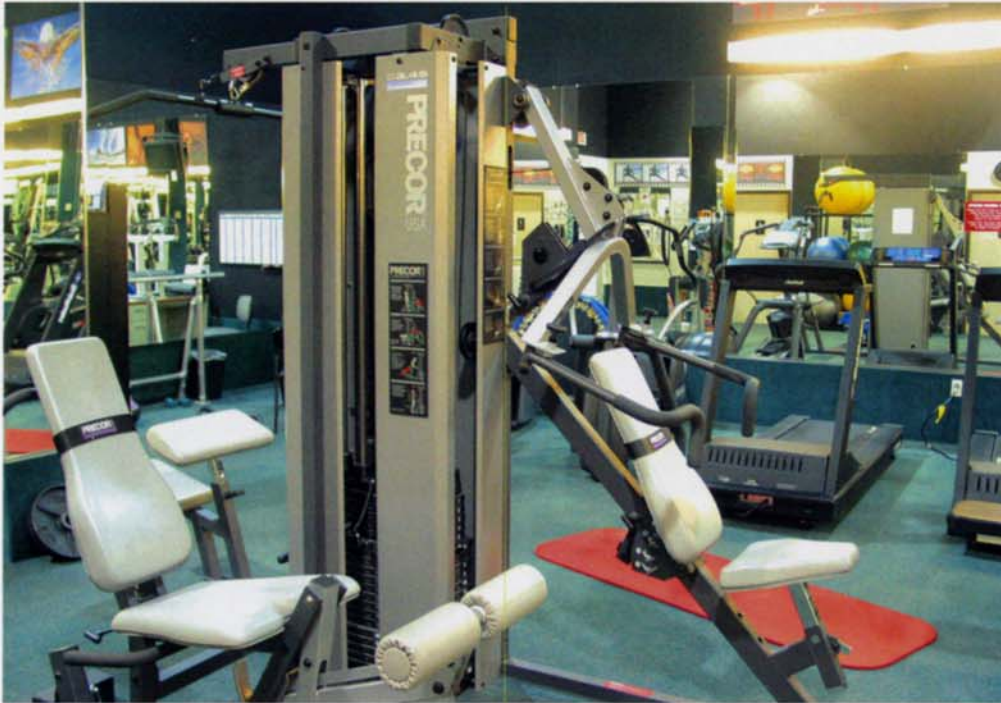
Prior to joining CBS in June 2009, Joe worked as a Financial Advisor at Tax and Financial Group, a financial services company. He received his bachelors degree in finance from San Diego State University. Joe reports to Manager of General Accounting, Kathy Lynch, and performs full general accounting functions. When he's not balancing the books, Joe enjoys spending time with his wife and 2 dogs.



Romantically Challenged star Alyssa Milano's first role was in what Broadway musical?

ANSWER on page 4

JOE'S GYM



We are pleased to welcome the personal training services of Michelle Nakamura, NASM, CPT, to Joe's Gym! Michelle has worked as a trainer and spinning instructor at Synergy Performance Health Club, and is also the creator of a successful boot camp for women in Thousand Oaks.

To set up an appointment for your FREE initial consultation and fitness assessment, or for more information about services and rates, please call Michelle at (818) 903-0034.

TOP TEN REASONS TO JOIN JOE'S GYM NOW!

- #10 A stranger just asked when your baby is due... and you're not pregnant.
- #9 Tank tops and shorts can be unforgiving.
- #8 Somehow the six-pack you drank did not exactly transform into six-pack abs.

- #7 You were totally out of breath after taking the stairs instead of the elevator – and you work on the second floor.
- #6 Your ten-year-old Chihuahua takes you for a walk.
- #5 It's been a very long time since you've been able to see your toes, let alone bend down and touch them.
- #4 You discover the convenience store a mere ½ block from your home is not at all convenient without motorized transportation.
- #3 You've recently declared your scale public enemy #1.
- #2 The \$12.00 a week you spend on iced vanilla lattes can buy you a whole month of exercise.

And the

- #1 reason to join Joe's Gym...
You want to be healthy, toned, and in the best shape of your life!

Joe's Gym is located in the basement of Stage 19. Memberships may be purchased at the Studio Supply Station. For more information, please call Judi, x5458.

Environmental Tips from

WORLD WILDLIFE FUND

THE GREEN SCENE

EARTH HOUR - MARCH 27, 2010 - 8:30PM

Last year during Earth Hour 2009, nearly one billion people in more than 4,000 cities around the world turned off their lights to demonstrate their commitment and encourage the world to take action on one of the most urgent issues facing our planet.

In that spirit, we invite you to take part in Earth Hour 2010. On March 27, 2010 at 8:30 p.m. local time, please join us and millions of others in turning out your lights for one hour.

VISIT EARTH HOUR.ORG

Volunteer Locally

earth day

Volunteers needed to help restore natural habitat along the Los Angeles River at the Richard Lillard Outdoor Classroom in Studio City.

Sponsored by the Village Gardeners

April 11, 2010

9:30a.m.-12:30p.m.

PLEASE PRE-REGISTER:
info@thevillagegardeners.org

Details and Directions at
www.thevillagegardeners.org

The Village Gardeners

11684 Ventura Blvd., #343 • Studio City CA 91604
Tel: (818) 788-8531 • info@thevillagegardeners.org

Catering

Delivery

to the lot for individual orders

Take Out

Dining In

we're just moments away

Zack's
ITALIAN CAFE

- Salads
- Pizzas
- Subs
- Pasta
- Chicken Dishes
- Seafood Dishes

10820 Ventura Boulevard
Studio City • 818-762-4225
www.zachscafe.com

**World Famous
Vitello's Restaurant**
EST. 1964
Italian Cuisine

Opera, Jazz or Cabaret Singers perform in one of our private music rooms throughout the week.

Private parties can be held "Upstairs at Vitello's" or in our festive "Green Room" both rooms have large screen TVs available for presentations.

WE DELIVER!

Lunch Hours
7 Days a Week
12:30 am to 4:00 pm

Dinner Hours
7 Days a Week
Sunday thru Thursday
4:00 pm to 10:00 pm
Friday & Saturday
4:00 pm to 11:00 pm

Show your CBS badge and save 15%

(818) 769-0905
www.vitellosrestaurant.com
4349 Tujunga Ave, Studio City



Inspired Life Strategies®

Presents
"Reclaiming Your Balance In A Stressed Out World"
In Beautiful Sedona, Arizona May 12- May 16th, 2010

WORKSHOP DESCRIPTION & OBJECTIVES

- Learn techniques to alleviate stress, burnout & skills to quiet the inner critic
- Learn to move beyond procrastination & stay focused
- Return home with a renewed sense of self, priorities & goals

LUXURY ACCOMODATIONS: L'Auberge de Sedona / Amara Creekside Resort
Experience breathtaking Red Rock vistas & creek side tranquility, magical dining experiences, a cozy lodge & intimate cottages and exclusive private spa.

RESERVATION:

Registration details & travel assistance may be found at:

www.inspiredlifestrageties.com

FOR LEASE

HUGE TOWNHOME

**3 bedroom, 2 bath + 2 car garage
in Gated Community!**



**11150 Glenoaks Blvd.
Pacoima, CA 91331**

**24 Hour Security
Pool & Jacuzzi
Pets Considered**

**Please call Susan
(818) 830-7560**

\$1850 per month

Full Catering Services Available!
Special Sushi Parties - Cocktail Parties - Private Parties
Buffet Style with Dessert Station



Asio
Sake Lounge
www.ahisushi.com

12915 Ventura Blvd. @ Coldwater Canyon
Studio City, CA 91604 • 818-981-0277

JCS Catering
can handle all of
your catering needs

Please call 818-655-5692
or stop by Carla's Café
to get more information.

Mexicali
COCINA • CANTINA

**CBS EMPLOYEES AND TENANTS
ENJOY 30% OFF YOUR CHECK
EVERYDAY 11:30 AM - 4:00 PM**

(PLEASE PRESENT BADGE FOR DISCOUNT)

12161 VENTURA BOULEVARD
STUDIO CITY, CALIFORNIA 91604
818-985-1744

(DOES NOT INCLUDE LOCO LUNCH, ALCOHOLIC BEVERAGES,
TAKE-OUT OR ANY OTHER OFFER)



PRINTED WITH VEGETABLE INKS ON
RECYCLED PAPER CONTAINING A
MINIMUM OF 10% POST-CONSUMER
RECYCLED CONTENT

NEW NAME, NEW LOOK SAME GREAT SERVICE!



FULL COLOR PRINTING • HIGH SPEED COPYING • POSTERS
BUSINESS CARDS • STATIONERY • INVOICES • NGR
FOIL • LAMINATION • DISPLAY CARDS • INVITATIONS

ORDER FROM YOUR HOME OR OFFICE THEN PICK UP AT
OUR STORE, RIGHT ACROSS THE STREET FROM CBS STUDIOS

3962 LAUREL CANYON STUDIO CITY, CA 91604
T: 818.509.0003 | F: 818.509.8932

SIGNS signs SIGNS signs SIGNS
ALL YOUR SIGN NEEDS
signs CBS Sign Shop on the lot at ext. 5395

To place ads in this publication... please call
Marsha, Client Services at (818) 655-5099

AD SIZES & RATES

Single	2.5" w x 1.5" tall\$50
Double	2.5" w x 3" tall\$100
Triple	2.5" w x 4.5" tall\$150
2xDouble	5.25" w x 3" tall\$200
2xTriple	5.25" w x 4.5" tall\$300

Artwork must be submitted in high res (300dpi) in
pdf, psd, eps, tif or jpg.

File correction rates are billed at \$40/hour
with a one hour minimum.



trivia answer



Alyssa Milano's
first role was in
the musical *Annie*
on Broadway. She
was 8 years old.